

OWNER'S MANUAL

Keurig® K-Cup® K60/K65 Special Edition & Signature Brewers



KEURIG®

K-CUP®

Single Cup
Brewing System

IMPORTANT SAFEGUARDS

Safe Operation & Use



When using electrical appliances, basic safety precautions should be followed, including the following:

1. Read all instructions before using.
2. Do not touch hot surfaces. Use handles and knobs when available.
3. This appliance must be properly installed and located in accordance with these instructions before it is used.
4. The use of accessory attachments not recommended by the appliance manufacturer may result in fire, electrical shock or injury to persons.
5. Do not place on or near a hot gas or electric burner, or in a heated oven.
6. Do not use outdoors.
7. To protect against fire, electric shock and injury do not immerse cords, plugs, or the appliance in water or any other liquid.
8. Do not overfill the Water Reservoir with water.
9. Use **only water** in this appliance! Do not put any other liquids or foods in the Water Reservoir except as instructed in the Cleaning Instructions in this guide.
10. Turn off and unplug the brewer before cleaning or maintenance. Allow to cool before putting on or taking off parts and before cleaning the appliance.
11. For best operation, plug the appliance into its own electrical outlet on a dedicated circuit to prevent flickering of lights, blowing of fuses or tripping a circuit breaker.
12. Do not operate any appliance with a damaged cord or plug or after the appliance malfunctions or is damaged in any manner. Contact Keurig Customer Service to report any malfunction of or damage to the brewer.
13. Do not let the cord hang over the edge of the table or counter, or touch hot surfaces.
14. To disconnect, press the Power Button on the brewer to 'OFF' status and then remove the plug from the wall outlet.
15. Close supervision is necessary when any appliance is used by or near children.
16. **Do not lift the brewer Handle while brewing is in progress.**
17. Always keep the Water Reservoir Lid on the Water Reservoir unless you are refilling it.
18. This appliance is equipped with a power cord having a grounding wire with a grounding plug. The appliance must be grounded using a 3-hole properly grounded outlet. In the event of an electrical short circuit, grounding reduces the risk of electrical shock.
19. If the outlet is a standard 2-prong wall outlet, it is your personal responsibility and obligation to have it replaced with a properly grounded 3-prong wall outlet.
20. Do not, under any circumstances, cut or remove the third (ground) prong from the power cord or use an adapter.
21. Consult a qualified electrician if the grounding instructions are not completely understood, or if doubt exists as to whether the appliance is properly grounded.
22. Do not use the appliance for other than its intended use.

SAVE THESE INSTRUCTIONS.

WARNING TO USERS AND PARENTS

1. **DO NOT** permit children to use brewer unless there is adult supervision. Brewer dispenses very hot water.
2. **SPECIAL NOTICE FOR HOT COCOA USERS: IMMEDIATELY AFTER USING A HOT COCOA K-CUP® PACK, RUN a Hot Water Brew Cycle** without a K-Cup® pack to avoid the possibility of clogging the exit needle. **DO NOT** assume the next user will do this.

CAUTION: There are two sharp needles that puncture the K-Cup® pack, one above the K-Cup® Pack Holder and the other in the bottom of the K-Cup® Pack Holder. To avoid risk of injury, do not put your fingers in the K-Cup® Pack Assembly Housing.

CAUTION: There is extremely hot water in the K-Cup® Pack Holder during the brew process. To avoid risk of injury, do not lift the Handle or open the K-Cup® Pack Assembly Housing during the brewing process.

CAUTION: Do not fill above MAX FILL line. If you fill the Water Reservoir above this point, you may occasionally get a larger brew than you selected for your first brew of the day. If you prefer to have your reservoir filled to the top, we recommend you use a large mug for your first brew of the day to avoid any risk of overflow.

CAUTION: Please always keep the brewer in its upright position to avoid potential injury and/or damage to your brewer.

SHORT CORD INSTRUCTIONS: A short power supply cord is provided to reduce the risk of becoming entangled in or tripping over a longer cord.

If an extension cord is used, (1) the marked electrical rating of the cord set or extension cord should be at least as great as the electrical rating of the appliance; (2) the cord should be arranged so that it will not drape over the countertop or tabletop where it can be pulled on by children or tripped over unintentionally; and (3) the extension cord must include a 3-prong grounding plug.

THIS PRODUCT IS FOR **HOUSEHOLD USE ONLY.**

WARNING THIS PRODUCT CONTAINS CHEMICALS, INCLUDING LEAD, WHICH IS KNOWN TO THE STATE OF CALIFORNIA TO CAUSE CANCER, BIRTH DEFECTS OR OTHER REPRODUCTIVE HARM.

 <p>WARNING RISK OF FIRE OR ELECTRIC SHOCK DO NOT OPEN</p>		<p>WARNING: TO REDUCE THE RISK OF FIRE OR ELECTRIC SHOCK, DO NOT REMOVE THE BOTTOM COVER. NO USER SERVICEABLE PARTS ARE INSIDE. REPAIR SHOULD BE DONE BY AUTHORIZED SERVICE PERSONNEL ONLY.</p>
--	--	--

TABLE OF CONTENTS

KEURIG® GOURMET SINGLE CUP HOME BREWING SYSTEM
K60/K65 Special Edition & Signature Brewers – Using Your Brewer

SET-UP

Helpful Hints	4
Unpacking	4
Features	5

SECTION 1 – SET-UP & FIRST BREW

Set-Up & First Brew	6
---------------------------	---

SECTION 2 – CONTROLS & INDICATORS

Setting the Clock	10
Programming On/Off Features	10
Programming Brew Temperature	12

SECTION 3 – CLEANING & MAINTENANCE

Cleaning	12
Descaling	14
Storage	15

SECTION 4 – TROUBLESHOOTING 16

SECTION 5 – WARRANTY 17

Record your brewer serial number here.

See Unpacking Instructions on page 4 for serial number location.

Removing the serial number label from the brewer will void warranty.

Set-Up

Helpful Hints

1. Plug brewer into its own grounded outlet.

If the electric circuit is overloaded with other appliances, your brewer may not function properly. The brewer should be operated on its own circuit, separate from other appliances.

2. Keep your brewer turned "ON."

To brew a fresh cup of coffee, tea or hot cocoa anytime you want, keep your brewer turned "ON" all the time. However, the brewer is fully programmable so you can set it to turn on and off automatically to match your schedule.

Or, if you prefer, set the brewer to automatically turn off after a period of time. Follow the simple instructions on pages 10–12 to find the settings that are most convenient for you.

3. For the best tasting gourmet coffee, tea or hot cocoa, Keurig recommends using bottled or filtered water.

Water quality varies from place to place. If you notice an undesirable taste in your cup of coffee, tea or hot cocoa (such as chlorine or other mineral tastes) we recommend you consider using bottled water or water from a filtration system. For best results, carefully follow manufacturer's instructions when using any water filtration system.

4. Customize the size, flavor & brew that's perfect for you.

With the choice of over 250 varieties of K-Cup® packs and 3 brew sizes (Small Cup-5.25 oz., Small Mug-7.25 oz. and Large Mug-9.25 oz.), your Keurig® brewer gives you endless options to customize the size, flavor and brew that's perfect for you. For a strong, intense cup, select an Extra Bold K-Cup® pack (with up to 30% more ground coffee than regular varieties) and brew size that's right for you. The smaller the brew size, the more intense flavor in your cup. The larger the brew size, the less intense flavor in your cup.

5. Remove K-Cup® pack after use.

Please see page 7 for brewing instructions.

6. Brewing into a travel mug.

To brew into a travel mug, simply remove the Drip Tray Assembly and place the travel mug on the Drip Tray Base.

7. Descalc brewer regularly.

Please see page 14 for instructions.

2. Remove enclosed literature.

3. Turn the box on its side with front of box face down.

4. Reach into the box and grasp the plastic bag that contains the brewer.

5. Carefully pull the plastic bag (and packaging materials) toward you and out of the box. The brewer will still be encased in the polyfoam and be on its side.

6. Remove the top polyfoam packaging material.

7. Carefully lift brewer off of the bottom polyfoam and place it upright on a flat, steady surface.

8. Lift plastic bag off of brewer.

9. Record the serial number for this brewer on page 3 of this guide. The serial number can be found on the bottom of the brewer box or on the brewer behind the Drip Tray (when removed).

10. Place the brewer upright on a flat, steady surface. Remove tape holding Water Reservoir in place.

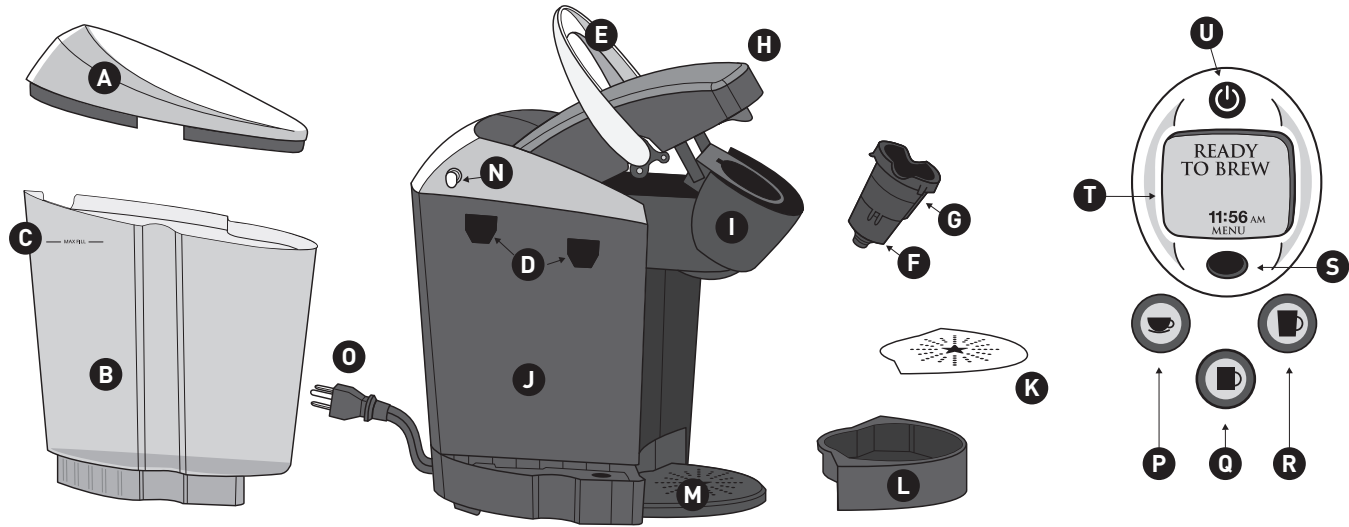
We recommend you save all packing materials in case future shipping of the product is necessary.

Unpacking Instructions

1. Place brewer box on a large steady surface (such as a table or countertop) or on the floor. Open the box.

WARNING:
Keep all plastic bags away from children.

Features K60/K65 Special Edition & Signature Brewers



K60/K65 Special Edition & Signature Brewers

- | | | |
|---|--|---------------------------|
| A. Water Reservoir Lid | G. K-Cup® Pack Holder
(F and G are the K-Cup®
Pack Holder Assembly) | K. Drip Tray Plate |
| B. Water Reservoir | H. Lid | L. Drip Tray |
| C. MAX FILL | I. K-Cup® Pack | M. Drip Tray Base |
| D. Water Reservoir
Lock Tab Slots | J. Housing | N. Vent |
| E. Handle | | O. Power Cord |
| F. Funnel | | |

Controls and Indicators

- | | |
|-------------------------------------|------------------------------|
| P. Small Cup Button 5.25 oz. | S. Menu Button |
| Q. Small Mug Button 7.25 oz. | T. LCD Control Center |
| R. Large Mug Button 9.25 oz. | U. Power Button |

SECTION 1 Set-Up & First Brew

IMPORTANT: You cannot use your Keurig® brewer until it has been set-up for its first use as set forth below.

NOTE: If brewer has been exposed to temperatures below freezing, allow brewer at least two hours to reach room temperature before brewing. A frozen or extremely cold brewer will not operate.



fig. 1 **Setting Up Your Brewer**

1. Unwrap cord and plug the brewer into a grounded outlet. Remove all pieces of packing tape and clear plastic sticker from LCD Control Center.
2. Place a large mug (10 oz. minimum) on the Drip Tray Plate.
3. Remove the Water Reservoir from brewer by first removing Lid from Reservoir (fig. 1), then lifting Reservoir straight up and away from brewer (may be tight), (fig. 2). Rinse with fresh water.

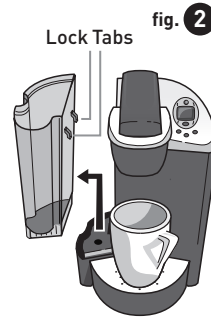


fig. 2

4. Fill Water Reservoir with bottled or filtered water so that the water is to and not beyond the MAX FILL line.
5. Place Water Reservoir base into the left side of the brewer and be sure the Water Reservoir Lock Tabs engage with the brewer (fig.2). Replace Lid on Water Reservoir.
6. Press the Power Button found directly above the LCD Control Center (fig. 3).
7. The LCD Control Center will illuminate and indicate "NOT READY." **NOTE: A K-Cup® pack should not be used for this sequence.**



fig. 3

NOTE: If the Water Reservoir is empty or not in place on the brewer, the LCD Control Center will also indicate "ADD WATER." None of the buttons will be activated until water is added to the Water Reservoir and Water Reservoir is in place.

fig. 4



8. The brewer will automatically fill the internal tank with water and then the water will be heated. This will take about 4 minutes. During the heating period, the LCD Control Center will indicate "NOT READY" (fig. 4). **Do not lift Handle during this heating period.**

Once the water is heated, "READY TO BREW" will be indicated and the Brew Buttons will be illuminated (fig. 5). **NOTE: You may see small amounts of water coming from the Vent and dripping into the Water Reservoir during this and subsequent heating — this is normal.**

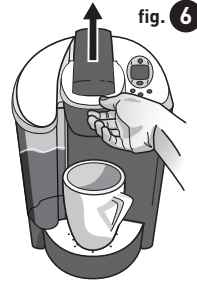
fig. 5



9. Lift and lower the Handle. Press the Small Mug Button to start a cleansing brew. When the brew cycle is complete, pour the hot water into the sink.

10. The one-time set-up process is now complete and you are ready to brew!
NOTE: The brewer may take 15 seconds between brews and then "READY TO BREW" will be indicated.

fig. 6



Ready to Brew Your First Cup

1. LCD Control Center will indicate "READY TO BREW."
2. Place a cup or mug on the Drip Tray Plate.
3. Lift the Handle and the K-Cup® Pack Holder will open toward you (fig. 6).

4. Select a K-Cup® pack.
NOTE: Do not remove the foil lid or puncture the K-Cup® pack.



5. Place a K-Cup® pack in the K-Cup® Pack Holder (fig. 7).
CAUTION: There are two sharp needles that puncture the K-Cup® pack, one above the K-Cup® Pack Holder and the other in the bottom of the K-Cup® Pack Holder. To avoid risk of injury, do not put your fingers in the K-Cup® Pack Assembly Housing.



fig. 7



6. Lower the Handle to close the Lid over the K-Cup® Pack Holder. (When it is closed completely, the LCD Control Center will indicate "READY TO BREW" and the Small Cup, Small Mug and Large Mug Buttons will flash for up to 60 seconds.)

SECTION 1 Set-Up & First Brew (Continued)



Small Cup
(5.25 oz.)



Small Mug
(7.25 oz.)



Large Mug
(9.25 oz.)

7. Choose the brew size of coffee, tea or hot cocoa by pressing the button that indicates your choice. The Small Cup choice will yield a 5.25 oz. serving, the Small Mug choice will yield a 7.25 oz. serving and the Large Mug choice will yield a 9.25 oz. serving. **NOTE: If you do not push a Brew Button in 60 seconds, the LCD Control Center will return to "READY TO BREW" and the Brew Buttons will be disabled to prevent accidental activation. Re-activate the Brew Buttons by lifting and lowering the Handle completely.**
8. The LCD Control Center will indicate "BREWING" and the brew size you selected will illuminate. **CAUTION: There is extremely hot water in the K-Cup® Pack Holder during the brew process. To avoid risk of injury, do not lift the Handle or open the K-Cup® Pack Assembly Housing during the brew process.**
9. There may be a short pause prior to beverage being dispensed. The entire brew process lasts for approximately 1 minute and ends with a burst of air to remove all liquid from the K-Cup® pack.



10. Lift the Handle and dispose of the used K-Cup® pack. **CAUTION: K-Cup® pack will be hot.**
11. Enjoy your first cup of Keurig Brewed® gourmet coffee, tea or hot cocoa!
12. The LCD Control Center may indicate "NOT READY" as the brewer heats water for the next brew cycle. "READY TO BREW" will be indicated after about 15 seconds. **NOTE: During this period, your brewer will prepare for the next brew. The pump will make a vibrating sound. This is normal.**

Stopping the Brew Process

If you need to stop brewing after the process has started, press the Power Button to turn the brewer off. The flow of coffee, tea or hot cocoa will stop, the heating element will shut off, and the blue lights illuminating the brew buttons and Water Reservoir will no longer be illuminated. **NOTE: You may get less coffee, tea or hot cocoa in your cup during your next brew. We recommend that you perform a cleansing brew after a terminated brew. Then your NEXT brew will be the volume you have selected.**

Adding Water

fig. 8



The LCD Control Center will indicate “ADD WATER” when the level in the Water Reservoir is low or if the Water Reservoir has been removed (fig. 8). The blue light in the Water Reservoir will also blink when water needs to be added. The brewer will not allow you to brew when “ADD WATER” is indicated.

The Water Reservoir can be filled in two ways.

1. Remove the Water Reservoir Lid and pour water directly into the Water Reservoir while it is still attached to the brewer. Fill with water to and not beyond the MAX FILL line. Replace the Lid.
2. Remove the Water Reservoir from brewer by first removing the Lid from the Water Reservoir, then lifting the Water Reservoir straight up and away from brewer. Fill with water to and not beyond the MAX FILL line. Place the Water Reservoir back on the brewer and replace the Lid. **IMPORTANT: Do not remove the Water Reservoir during the brewing process.**

Brewing Iced Beverages

Your iced tea and iced coffee taste best when fresh-brewed hot over ice. Try it by placing a tall cup filled with ice on the Drip Tray Plate (the Drip Tray Assembly can be removed to accommodate taller cups), choose your favorite K-Cup® pack and press your preferred brew size. Also, look for the Brew Over Ice icon on K-Cup® packs that are specially crafted to brew over ice! **IMPORTANT: Do not brew into a cup made of glass. Doing so may cause the glass to crack or break.**

Brewing Hot Water

Your brewer is able to produce hot water for making hot cocoa from a packet, for use in cooking, for making soups, etc. Simply follow the instructions on page 7 — “Ready To Brew Your First Cup” — without adding a K-Cup® pack.

NOTE: After brewing a hot cocoa K-Cup® pack, we recommend running a cleansing brew without a K-Cup® pack.

Purging the Brewer

If your brewer has not been used for more than one week, you should purge the water from the internal tank.

1. If there is water in the Water Reservoir, remove the Lid, then lift the Water Reservoir straight up and away from brewer. Discard water, rinse and refill with water. Place the Water Reservoir back on the brewer and replace the Lid. (If there is no water in the Water Reservoir, simply refill.)
2. Be sure the brewer is turned on. Lift and lower the Handle on the brewer without inserting a K-Cup® pack.
3. The LCD Control Center will indicate “READY TO BREW” and the Small Cup, Small Mug and Large Mug Buttons will flash. Be sure to have a large mug on the Drip Tray Plate and then press the Large Mug Button.
4. Repeat steps 2 and 3 one more time to completely purge water from internal tank.

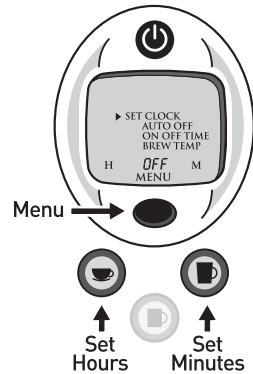
If you are experiencing any problems with your brewer, please contact Customer Service at 1.866.901.BREW (2739).

SECTION 2 Controls & Indicators (LCD Control Center)

Setting the Clock

Setting the clock is optional. When the clock is set, the time will appear in the LCD Control Center. **NOTE: You must set the clock if you will be using the On/Off Time programming feature.**

fig. 9



1. Press the Menu Button.
2. The word "OFF" will appear at the bottom of the LCD Control Center to indicate that the clock is not set. The programming options will appear on the LCD Control Center with a small arrow pointing to "SET CLOCK" (fig. 9). "H" (Hour) and "M" (Minute) will appear and blink.
3. Press or hold the blue Small Cup Button under the blinking "H" until you have reached the appropriate hour. If the hour has passed 12, the indicator switches from "AM" to "PM."
4. Press or hold the blue Large Mug Button under the blinking "M" to set the minutes.
5. When you have reached the correct time, press the Menu Button five times to scroll through the remaining programming options and exit the programming mode.
6. The correct time should now be displayed in the LCD Control Center. **NOTE: If power is interrupted to the brewer by unplugging it, or if power is lost, follow the procedure above to reset the time as the clock will not be visible until the time is set.**

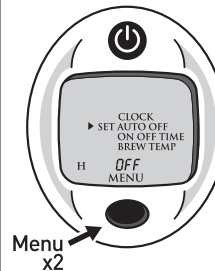
Programming On/Off Features

The brewer provides three modes so that you can enjoy gourmet coffee, tea or hot cocoa on your own schedule. By programming your brewer to turn on each morning, you will never have to wait for the brewer to warm up to brew a gourmet cup of coffee.

1. **Leave it ON all the time.** The brewer can be left on all the time so that it is always ready to brew a fresh cup of gourmet coffee, tea or hot cocoa. To turn the brewer off at any time, simply press the Power Button. **(NOTE: Although the clock remains on if set, you can not brew a cup of coffee, tea or hot cocoa.)** Press the Power Button again to restore power to the brewer. You will have to wait for the water to heat up before the brewer is ready to brew.

2. Set the brewer to Auto Off following a specified period of time after the last brew.

fig. 10



- a. Press the Menu Button twice to program the Auto Off feature. The LCD Control Center will display the programming options with a small arrow next to "SET AUTO OFF" (fig. 10).
- b. Press or hold the blue Small Cup Button under the blinking "H" to advance 1 hour at a time, up to 9 hours.

fig. 11



- c. After setting the desired Auto Off Time, press the Menu Button four times to scroll through the remaining programming options and exit the programming mode. "AUTO OFF SET" (fig. 11) will now be indicated to confirm that it has been set.
- d. To cancel the Auto Off feature, press the Menu Button twice to reach the Auto Off programming mode. Press and release the Small Cup Button under the blinking "H" to advance one hour at a time until "OFF" is indicated.

3. Program your brewer for a specific On/Off Time. NOTE: To use this programming feature, the clock must be set to the correct time. The clock will not be displayed unless the time is set.

fig. 12



- a. After setting the correct time (required), press the Menu Button three times to program the On Time feature. The LCD Control Center will show the programming options with a small arrow next to "SET ON TIME" (fig. 12).
- b. Press or hold the blue Small Cup Button under the "H" to scroll through the hours to your desired "ON TIME" hour.
- c. Press or hold the blue Large Mug Button under the "M" to scroll through the minutes to your desired "ON TIME" minutes.

d. After setting the desired time, press the Menu Button to save the "ON TIME" and move to the "SET OFF TIME" (fig. 13).

fig. 13



- e. If you want to set an "OFF TIME," repeat the procedure above in steps b & c to set your desired "OFF TIME."
- f. To complete the process, press the Menu Button two more times to exit the programming mode. The LCD Control Center will indicate the options you have set.
- g. The On Time and Off Time functions operate independently from one another. To cancel either set function, follow the steps above and use the "H" and "M" buttons to advance to 12:00 AM. Make sure the M button is set to :00, then change the "H" button. When you reach 12:00 AM, the LCD Control Center will indicate "OFF" and the function will be disabled.

fig. 14



EXAMPLE: If you chose to set the On Time at 6:15 AM and the Off Time for 10:00 PM, then the brewer will be "READY TO BREW" and maintain hot water in the tank during that time so that it is always ready for you to brew. If you wanted to brew outside this window, simply press the Power Button and you can brew as soon as the water is heated and the "READY TO BREW" is indicated on the LCD Control Center.

NOTE: The "AUTO OFF" Timer and the On/Off Time programming options operate independently but can also be programmed to work together. For example, you can set the On Time function to turn on at 7:00 AM and then set the Auto Off Timer function to turn off the brewer two hours after the last brew (fig. 14).

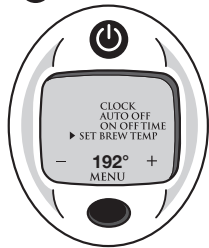
SECTION 2 Controls & Indicators [LCD Control Center] [Continued]

Programming Brew Temperature (187° – 192° F)

The brewer is preset to brew at a temperature of 192°. You can adjust this temperature down by 5 degrees if you prefer a cooler cup of coffee, tea or hot cocoa. Simply follow the instructions below.

1. Press the Menu Button five times to program the Brew Temperature feature.
2. The LCD Control Center will display the programming options with a small arrow next to "SET BREW TEMP" (fig. 15). Also, the temperature 192° (initial setting) will be indicated at the bottom of the LCD Control Center to indicate the current temperature setting.
3. A minus sign will appear over the Small Cup Button and/or a plus sign over the Large Mug Button. Use these buttons to raise or lower the temperature one degree at a time.

fig. 15



4. Once you have reached your desired brew temperature, press the Menu Button once to exit the programming mode. "BREW TEMP SET" will be indicated in the LCD Control Center if you have changed it from 192°.
5. To change the brew temperature again, repeat steps 1 through 3 to change the temperature up or down, remembering that the temperature can only be between 187° and 192°.

SECTION 3 Cleaning & Maintenance**Cleaning External Parts**

Regular cleaning of the brewer's external components is recommended.

1. Never immerse the brewer in water or other liquids. The Housing and other external components may be cleaned with a damp, soapy, non-abrasive cloth.
2. The Drip Tray can accumulate up to 8 oz. of overflow. The Drip Tray and Drip Tray Plate should be periodically inspected and rinsed clean. To remove the Drip Tray Assembly, simply slide it toward you, keeping it level at all times to avoid spilling. The Drip Tray and Drip Tray Plate should not be placed in the dishwasher. They should be cleaned with a damp, soapy, non-abrasive cloth and rinsed thoroughly.

Cleaning the K-Cup® Pack Holder Assembly

fig. 16



1. **Cleaning the Parts** – The K-Cup® Pack Holder Assembly can be placed onto the top shelf of a dishwasher. **NOTE: Use low temperature cycles in the dishwasher.** To remove from the brewer, lift the Handle and grasp the top of the K-Cup® Pack Holder with one hand while pushing up on the bottom of the K-Cup® Pack Holder from underneath with the other until it releases (fig. 16). After cleaning, align the K-Cup® Pack Holder with the opening using the two front ribs as a guide, and snap into place from the top.

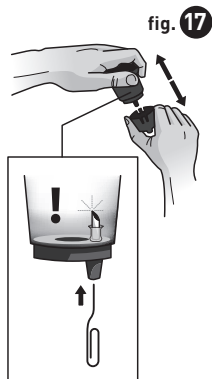


fig. 17

2. Cleaning the Funnel – The Funnel can be removed from the K-Cup® Pack Holder by pulling on it until it snaps off (fig. 17). The Funnel is dishwasher safe. To replace it, just snap it back onto the K-Cup® Pack Holder Assembly.

3. Cleaning the Exit Needle – The Exit Needle is located on the inside bottom of the K-Cup® Pack Holder Assembly. Should a clog arise due to coffee grinds, it can be cleaned using a paper clip or similar tool. Remove K-Cup® Pack Holder Assembly and detach Funnel. Insert the paper clip (fig. 17) into the Exit Needle to loosen the clog and push it out. The K-Cup® Pack Holder is dishwasher safe. **CAUTION: There are sharp**

needles that puncture the K-Cup® pack above the K-Cup® Pack Holder and in the bottom of the K-Cup® Pack Holder. To avoid risk of injury, do not put your fingers in the K-Cup® Pack Assembly Housing.

Cleaning the Water Reservoir & Water Reservoir Lid

The Water Reservoir Lid and Water Reservoir should be periodically inspected and cleaned.

The Water Reservoir Lid or Water Reservoir should not be put into the dishwasher. They should be cleaned with a damp, soapy, non-abrasive cloth and rinsed thoroughly. Do not dry the inside of the Water Reservoir with a cloth as lint may remain.

To clean the filter screen at the base of your Water Reservoir, empty the Water Reservoir and follow one or all of the following procedures.

NOTE: If you are using a water filter inside the Water Reservoir, remove it before cleaning.

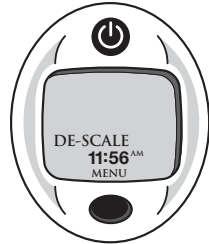
1. Rinse the filter screen with the strong force of water from your faucet.
2. If you have a sprayer, aim the water spray at the filter screen.
3. Fill the Water Reservoir with approximately two inches of clean water and agitate (shake) the Water Reservoir.

Empty the Water Reservoir then fill it with clean water and return it to the brewer. If needed, repeat above procedures. **CAUTION: Please rinse the Water Reservoir thoroughly after cleaning. This will ensure that no cleaners or cleaning solutions remain as they may contaminate the water supply in the brewer.**

Descaling Your Brewer

Depending on the mineral content of your water, calcium deposits or scale may build up in your brewer. Scale is non-toxic but if left unattended can hinder brewer performance. Regularly descaling your brewer every 3-6 months helps maintain the heating element, and other internal parts that come in contact with water. Calcium deposits may build up faster, making it necessary to descale more often.

fig. 18



You should promptly descale if "DESCALE" is indicated on the LCD Control Center (fig. 18). However, even if "DESCALE" is not indicated, you should continue to descale your brewer every 3-6 months. Properly follow the descaling procedure.

Descaling Procedure

Before you begin, you will need a large ceramic mug, fresh water, descale solution and access to a sink. Do not use a paper cup.

- Empty the water from the Water Reservoir. If there is a Keurig™ Water Filter, remove and set aside. Disable "Auto Off" features, if necessary (refer to page 10).

STEP 1: FIRST DESCALING SOLUTION RINSE

- Press the Power Button to power the brewer off.
- Pour the entire bottle of Keurig™ Descaling Solution into the Water Reservoir. Then fill the empty bottle with water and pour into the Water Reservoir. Press the Power Button to turn the brewer back on.
- Place a large mug on the Drip Tray Plate and run a cleansing brew using the largest brew size. Do not use a K-Cup® pack. Pour the contents of the mug into the sink.

STEP 2: SECOND DESCALING SOLUTION RINSE

- Repeat the brew process without a K-Cup® pack, until ADD WATER is indicated. Let brewer stand for at least 30 minutes while still on.
- After 30 minutes, discard any residual solution and rinse the Water Reservoir thoroughly.

STEP 3: FRESH WATER RINSE

- Ensure the Water Reservoir is filled with fresh water to and not beyond the MAX FILL line.
- Place a large mug on the Drip Tray Plate and run a cleansing brew using the largest brew size. Do not use a K-Cup® pack. Pour the contents of the mug into the sink.
- Repeat brew process until you have completed at least 12 brews using the largest brew size. You may need to refill the Water Reservoir at least one time during this process.

NOTE: If “DESCALE” is still indicated after completing the procedure, repeat the descaling procedure above.

NOTE: The cleaning action of Keurig™ Descaling Solution may result in a foam dispensed from the brewer. This is natural, as the solution is reacting with the scale inside. For a brewer that is heavily scaled, the brewer may not fill properly after the descaler is added. If this occurs, you may see only a small or no output dispensed followed by the sound of air blowing out. If this occurs:

- Turn off and unplug the brewer.
- If there is Keurig™ Descaling Solution in the Water Reservoir, discard the contents, rinse the Water Reservoir thoroughly and refill with water.
- Plug the brewer back in, power on, and repeat the Step 3 Fresh Water Rinse cycle. The brewer should begin to function normally as the solution is rinsed out and the scale is removed. If problem persists, allow brewer to sit unplugged for at least 30 minutes before continuing with the rinse.

Visit us online for more information at www.keurig.com/descaling.

Service

Beyond these recommended cleaning and maintenance procedures, this brewer is not user serviceable. For service, please refer to the Warranty section of this guide.

Storage

Empty the Water Reservoir before storing, and take care to ensure that you store your brewer in a safe and **frost free** environment. Please be sure to store your brewer in its **upright position** to avoid water leakage from the inner tank. If you store the brewer in a cold environment, you run the risk of water freezing inside the brewer and causing damage. When you prepare to use it after storage, we recommend rinsing the Water Reservoir with fresh water and running three cleansing brews without a K-Cup® pack.

If you plan to move your brewer to a different location, turn the brewer off, unplug it, and empty the Water Reservoir. If your brewer has been in an environment below freezing, please be sure to let it warm to room temperature for at least 2 hours before using.

SECTION 4 Troubleshooting

SITUATION	SOLUTION
Brewer does not have power	<ul style="list-style-type: none"> • Plug brewer into an independent outlet. • Check to be sure that it is plugged in securely. • Plug into a different outlet. • Reset your home's circuit breaker, if necessary. • Make sure that the Power Button has been turned on.
Brewer will not brew	<ul style="list-style-type: none"> • After placing the K-Cup® pack in the K-Cup® Pack Holder, make sure the Handle is pushed down securely and the LCD Control Center indicates "READY TO BREW" with the three Brew Buttons flashing. Then press the Small Cup, Small Mug or Large Mug Button. • If the LCD Control Center indicates "ADD WATER," add water to the Water Reservoir. Fill to and not beyond the MAX FILL line. Make sure the Water Reservoir is seated properly in its base. • If the LCD Control Center indicates "ADD WATER" even after refilling, contact Customer Service at 1.866.901.BREW (2739). • The Exit Needle may be clogged (refer to page 13). • If the LCD Control Center indicates "PRIME" and the blue light in the Water Reservoir is flashing, see below.
LCD Control Center indicates "PRIME" and the blue light in the Water Reservoir is flashing	<ul style="list-style-type: none"> • Completely remove the Water Reservoir and thoroughly clean (refer to page 13). Ensure the Water Reservoir is filled to and not beyond the MAX FILL line. Return Water Reservoir to the brewer and ensure it is seated properly. • If you have completed the above procedure two times and this situation persists, contact Customer Service at 1.866.901.BREW (2739).

SITUATION	SOLUTION
Brewing a partial cup	<ul style="list-style-type: none"> • The Exit Needle may be clogged (refer to page 13). • Clean the K-Cup® Pack Holder if necessary and rinse under faucet (refer to page 12). • The Water Reservoir may have been removed during brewing. Replace the Water Reservoir and perform a cleansing brew without a K-Cup® pack. • Descal the brewer (refer to page 14). • If you have repeated the descale procedure on your brewer two times and it is still only brewing a partial cup, contact Customer Service at 1.866.901.BREW (2739).
The time is not displayed on the LCD Control Center	<ul style="list-style-type: none"> • The time will not be displayed on the LCD Control Center unless you have set it. To set the clock, follow the procedure on page 10. • If power is interrupted to the brewer, you will need to set the clock again using the procedure on page 10.
My brewer shuts off or turns on automatically	<ul style="list-style-type: none"> • Check to make sure that the Auto Off and/or On/Off Time features have not been set. To do this, press the Menu Button and scroll through the programming options. "OFF" should be indicated for Auto Off and On/Off Time. If "OFF" is not indicated, follow directions on page 10 to reset.
If any problems persist, contact Customer Service at 1.866.901.BREW (2739)	

SECTION 5 Warranty

Limited One Year Warranty

Keurig, Incorporated warrants that your brewer will be free of defects in materials or workmanship **under normal home** use for one year from the date of purchase. It is recommended that you fill out and return the warranty card enclosed with your brewer so that your purchase information will be stored in our system. Keurig will, at its option, repair or replace a defective brewer without charge upon its receipt of proof of the date of purchase. If a replacement brewer is necessary to service this warranty, the replacement brewer may be new or reconditioned. If a replacement brewer is sent, a new limited one year warranty will be applied to the replacement brewer.

This warranty only applies to brewers operated in the United States and Canada. This warranty gives you specific legal rights, and you may also have other rights that vary from state to state and, in the case of Canada, from province to province.

Only the use of Keurig Brewed® K-Cup® brand packs and accessories will guarantee the proper functioning and lifetime of your Keurig® brewer. Any damage to or malfunction of your brewer resulting from the use of non Keurig Brewed® K-Cup® brand packs and accessories may not be covered by this warranty or may result in a service fee if the damage or malfunction is determined to be caused by such use.

What is not covered by the Limited Warranty?

THIS WARRANTY DOES NOT COVER CONSEQUENTIAL OR INCIDENTAL DAMAGES SUCH AS PROPERTY DAMAGE AND DOES NOT COVER INCIDENTAL COSTS AND EXPENSES RESULTING FROM ANY BREACH OF THIS WARRANTY, EVEN IF FORESEEABLE. Some states or provinces do not allow the exclusion or limitations of incidental or consequential damages, so the above limitation or exclusion may not apply to you depending on the state or province of purchase.

Nor does this warranty cover damages caused by use of non Keurig Brewed® K-Cup® brand packs or accessories, services performed by anyone other than Keurig or its authorized service providers, use of parts other than genuine Keurig® parts, or external causes such as abuse, misuse, inappropriate power supply or acts of God.

Other Limitations

THIS WARRANTY IS EXCLUSIVE AND IS IN LIEU OF ANY OTHER EXPRESS WARRANTY, WHETHER WRITTEN OR ORAL. IN ADDITION, KEURIG HEREBY SPECIFICALLY DISCLAIMS ALL OTHER WARRANTIES WITH RESPECT TO YOUR K60/K65 SPECIAL EDITION & SIGNATURE BREWER, INCLUDING ANY IMPLIED WARRANTY OF MERCHANTABILITY OR FITNESS FOR ANY PARTICULAR PURPOSE. Some states or provinces do not allow disclaimers of such implied warranties or limitations on how long an implied warranty lasts, so the above limitation may not apply to you depending on the state or the province of purchase.

How do you obtain warranty service?

Keurig® brewers are high-quality appliances and, with proper care, are intended to provide years of satisfying performance. However, should the need arise for warranty servicing, simply call Keurig Customer Service at our toll free phone number 1.866.901.BREW [2739]. Please do not return your brewer for servicing without first speaking to Keurig Customer Service to obtain an Authorization to Return number [ATR]. Keurig® brewers returned without an ATR number will be returned to the sender without servicing.

Keurig, Incorporated
55 Walkers Brook Drive
Reading, MA 01867
1.866.901.BREW (2739)

Scan. Click. Call!

Learn more and reach us quickly without leaving home.



Scan here for videos about caring for your brewer!

Scan this QR code with your smartphone for step-by-step videos on cleaning, descaling and more. Or if you prefer, you can watch the videos on your computer at www.keurig.com/customer-service



Have questions? We're here to help!

Keurig is committed to your satisfaction. If you have questions, just give us a call to have them answered quickly without leaving the comfort of your home. **1.866.901.BREW (2739)**

To learn more about Keurig, visit www.keurig.com or call 1.866.901.BREW (2739)

Keurig, Incorporated
55 Walkers Brook Drive
Reading, MA 01867

Keurig, Incorporated is a wholly-owned
subsidiary of Green Mountain Coffee Roasters, Inc.



For Household Use Only

Pat./Brevets www.GMCR.com/patents

© 2013 Keurig, Incorporated
All rights reserved

P/N 60-202470-000 Rev C
09/13